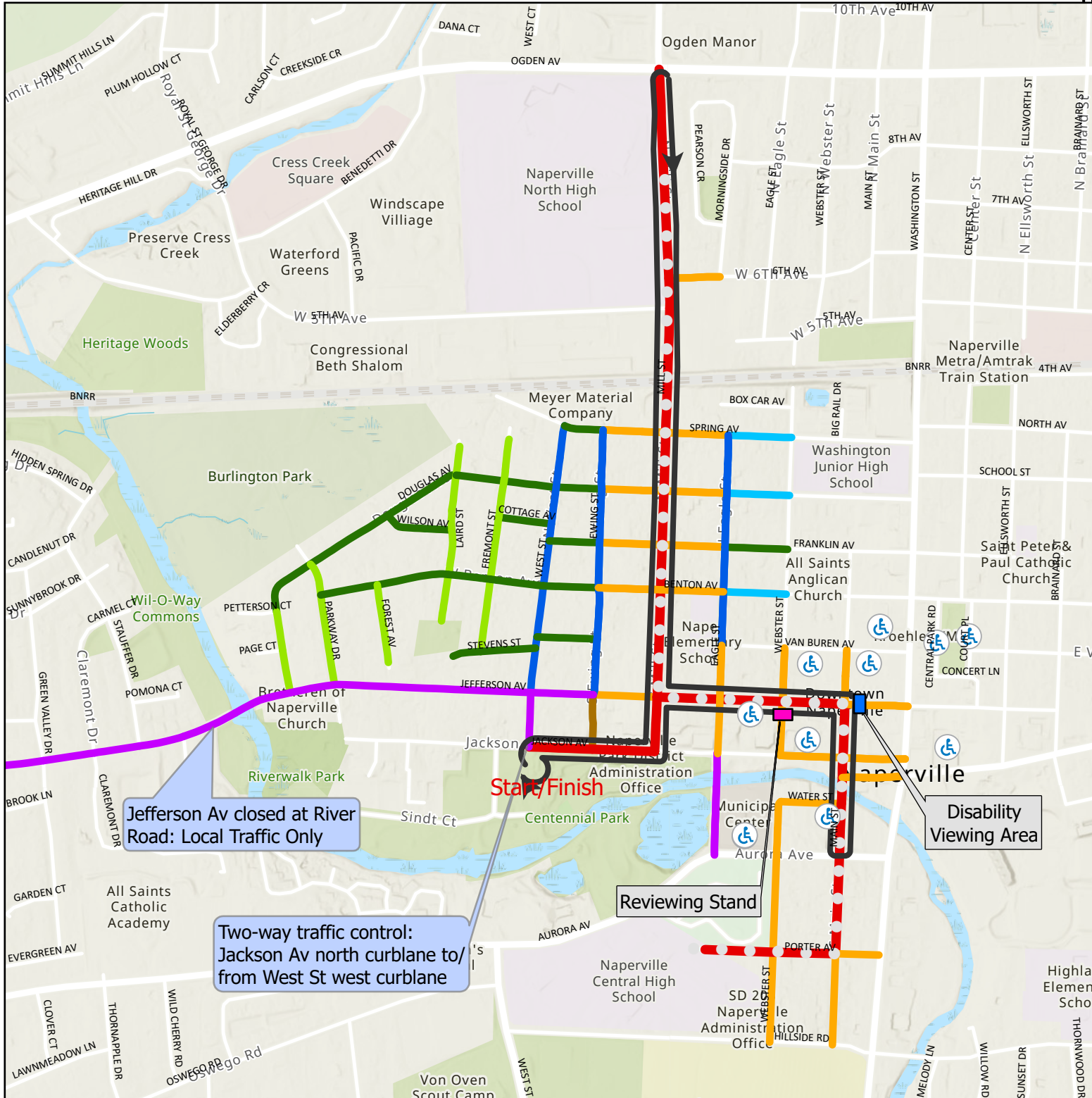


# St. Paddy's Day 5K & St. Patrick's Day Parade Traffic Control Plan

## March 9, 2024



City of Naperville  
 Special Events  
 Grace Fratto  
 (630) 420-6045  
 www.naperville.il.us  
 1/31/2024

This map should be used for reference only. The data is subject to change without notice. City of Naperville assumes no liability in the use or application of the data. Reproduction or redistribution is forbidden without expressed written consent from the City of Naperville.

● Parade Route (Starts at 10:00am)      ➔ 5K Run/Walk Route (Starts at 8:00am)

### ROAD CLOSURES & PARKING RESTRICTIONS:

- █ Road Closure: (7:15am to 11:30am) & No parking, Tow-Away Zone: 5:00am - 11:30am
- █ Road Closure (7:15am to 11:30am) & Limited Parking Access (Not a Tow-Away Zone): 5:00am to 11:30am
- █ Road Closure (7:15am to 11:30am) & No Parking (Not a Tow-Away Zone): 5:00am to 11:30am
- █ No Parking on North Side of Street (Not a Tow-Away Zone): 5:00am - 11:30am
- █ No Parking on South Side of Street (Not a Tow-Away Zone): 5:00am - 11:30am
- █ No Parking on East Side of Street (Not a Tow-Away Zone): 5:00am - 11:30am
- █ No Parking on West Side of Street (Not a Tow-Away Zone): 5:00am - 11:30am
- █ Local Traffic Only